

C6000 Android Mobile Computer



Industrial and Humanized Hardware Design

Industrial&humanized keypad design and tough 5.5 inch touch screen together with high resolution of 720*1440 display shall match high standards in logistics, express and retail.

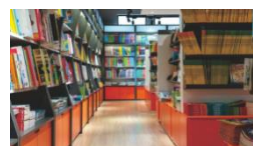
Octa-Core Processor&Large Memory

Android 10.0 OS with memory of 3GB RAM/32GB ROM or 4GB RAM/64GB ROM shall provide the highly standard experience

Superior Data Communication and Security Guarantee

Double insurance of 4G & WIFI network and highly secured Android 10.0 system shall provide the high speed data communication and perfect security guarantee;

Use environment



SPECIFICATIONS		
PHYSICAL CHARACTERISTICS		
Dimension	170mm(H)x80mm(W)x20mm(D)±2 mm	
Weight	Net Weight :380g (including battery&wrist strap)	
Display	Tough 5.5 in. TFT-LCD(720x1440)touch screen with backlight	
Backlight	LED backlight	
Expansions	2 PSAM, 2 SIM, 1 TF	
Battery	Rechargeable li-ion polymer, 3.8V,4800mAh	
PERFORMANCE CHARACTERISTICS		
CPU	Cortex A73 2.0GHz octa-core	
Operating System	Android 10.0	
Storage	4GB RAM/64GB ROM, MicroSD(max 256GB expansion)	
USER ENVIRONMENT		
Operating Temp.	-20℃ to 50℃	
Storage Temp.	-20℃ to 70℃	
Humidity	5%RH to 95%RH(non-condensing)	
Drop Specifications	5ft./1.5 m drop to concrete across the operating temperature range	
Sealing	IP65, IEC compliance	
ESD	±15kv air discharge, ±8kv direct discharge	
DEVELOPMENT ENVIRONMENT		
SDK	Handheld-Wireless Software Development Kit	
Language	Java	
Environment	Android Studio or Eclipse	
DATA COMMUNICATION		
WWAN	TDD-LTE Band 38, 39, 40, 41; FDD-LTE Band 1, 2, 3, 4, 5,7,8,12, 17, 20; WCDMA(850/1900/2100MHz); GSM/GPRS/Edge (850/900/1800/1900MHz);	
WLAN	2.4GHz/5.0GHz Dual Frequency, IEEE 802.11 a/b/g/n/ac	
WPAN	Bluetooth Class v2.1+EDR, Bluetooth v3.0+HS, Bluetooth v4.2	
GPS	GPS(embedded A-GPS),Beidou,Glonass, accuracy of 5 m	
DATA CAPTUER		
BARCODE READER(OPTIONAL)		
2D Barcode	2D CMOS Imager	Honeywell N6703 2D Scan Engine/ Newland NLS-CM60/Newland NLS-N1
	Symbologies	PDF417, MicroPDF417, Composite, RSS, TLC-39, Datamatrix, QR code, Micro QR code, Aztec, MaxiCode, Postal Codes, US PostNet, US Planet, UK Postal, Australian Postal, Japan Postal, Dutch Postal. etc.
COLOR CAMERA		
Resolution	Rear 13 megapixel, front 5.0 megapixel	

Lens	Auto-focus with LED flash	
RFID READER(OPTIONAL)		
RFID NFC	Frequency	13.56MHz
	Protocol	ISO 14443A&15693, NFC-IP1, NFC-IP2
	R/W Range	3cm to 5cm
PSAM SECURITY(OPTIONAL)		
Protocol	ISO 7816	
Baudrate	9600, 19200, 38400,43000, 56000, 57600, 115200	
Slot	2 slots(maximum)	
ACCESSORIES		
Standard	1xPower Supply; 1xLithium Polymer Battery; 1xType-C cable	
Optional	Cradle	