

## BX6100 Android Mobile Computer



### Industrial and Humanized Hardware Design

Industrial&humanized keypad design and tough 5.5 inch touch screen together with high resolution of 720\*1440 display shall match high standards in logistics, express and retail.

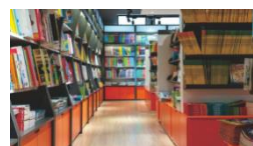
### Octa-Core Processor&Large Memory

Android 10.0 OS with memory of 2GB RAM/16GB ROM or 4GB RAM/64GB ROM shall provide the highly standard experience

### Superior Data Communication and Security Guarantee

Double insurance of 4G & WIFI network and highly secured Android 10.0 system shall provide the high speed data communication and perfect security guarantee;

### Use environment



<b>SPECIFICATIONS</b>		
<b>PHYSICAL CHARACTERISTICS</b>		
Dimension	166mm(H)x79mm(W)x31mm(D)±2 mm	
Weight	Net Weight :650g	
Display	Tough 5.5 in. TFT-LCD(720x1440)touch screen with backlight	
Backlight	LED backlight	
Expansions	1 PSAM, 1 SIM, 1 TF	
Battery	Rechargeable li-ion polymer, 3.8V, 9000mAh	
<b>PERFORMANCE CHARACTERISTICS</b>		
CPU	Cortex A73 2.0GHz octa-core	
Operating System	Android 10.0	
Storage	2GB RAM/16GB ROM or 4GB RAM/64GB ROM, MicroSD(max 256GB expansion)	
<b>USER ENVIRONMENT</b>		
Operating Temp.	-20℃ to 50℃	
Storage Temp.	-20℃ to 70℃	
Humidity	5%RH to 95%RH(non-condensing)	
Drop Specifications	5ft./1.5 m drop to concrete across the operating temperature range	
Sealing	IP65, IEC compliance	
ESD	±15kv air discharge, ±8kv direct discharge	
<b>DEVELOPMENT ENVIRONMENT</b>		
SDK	Handheld-Wireless Software Development Kit	
Language	Java	
Environment	Android Studio or Eclipse	
<b>DATA COMMUNICATION</b>		
WWAN	TDD-LTE Band 38, 39, 40, 41; FDD-LTE Band 1, 2, 3, 4, 5,7,8,12, 17, 20; WCDMA(850/1900/2100MHz); GSM/GPRS/Edge (850/900/1800/1900MHz);	
WLAN	2.4GHz/5.0GHz Dual Frequency, IEEE 802.11 a/b/g/n/ac	
WPAN	Bluetooth Class v2.1+EDR, Bluetooth v3.0+HS, Bluetooth v4.2	
GPS	GPS(embedded A-GPS), Beidou,accuracy of 5 m	
<b>DATA CAPTUER</b>		
<b>BARCODE READER(OPTIONAL)</b>		
2D barcode	2D CMOS Imager	Zebra SE4710// Newland NLS-CM60 etc.
	Symbologies	PDF417, MicroPDF417, Composite, RSS, TLC-39, Datamatrix, QR code, Micro QR code, Aztec, MaxiCode, Postal Codes, US PostNet, US Planet, UK Postal, Australian Postal, Japan Postal, Dutch Postal. etc.
<b>COLOR CAMERA</b>		
Resolution	Rear 13 megapixel, front 5.0 megapixel	

Lens	Auto-focus with LED flash	
<b>RFID READER(OPTIONAL)</b>		
RFID NFC	Frequency	13.56MHz
	Protocol	ISO 14443A&15693, NFC-IP1, NFC-IP2
	R/W Range	3cm to 5cm
RFID UHF	Frequency	865~868MHz or 902~928MHz
	Protocol	EPC C1 GEN2/ISO 18000-6C
	Antenna Gain	Circular antenna(4dBi)
	R/W Range	20 m(tags and environment dependent)
<b>PSAM SECURITY(OPTIONAL)</b>		
Protocol	ISO 7816	
Baudrate	9600, 19200, 38400,43000, 56000, 57600, 115200	
Slot	2 slots(maximum)	
<b>ACCESSORIES</b>		
Standard	1xPower Supply; 1xLithium Polymer Battery; 1xType-C cable	
Optional	Cradle	